

Rough Sleeping: Newport



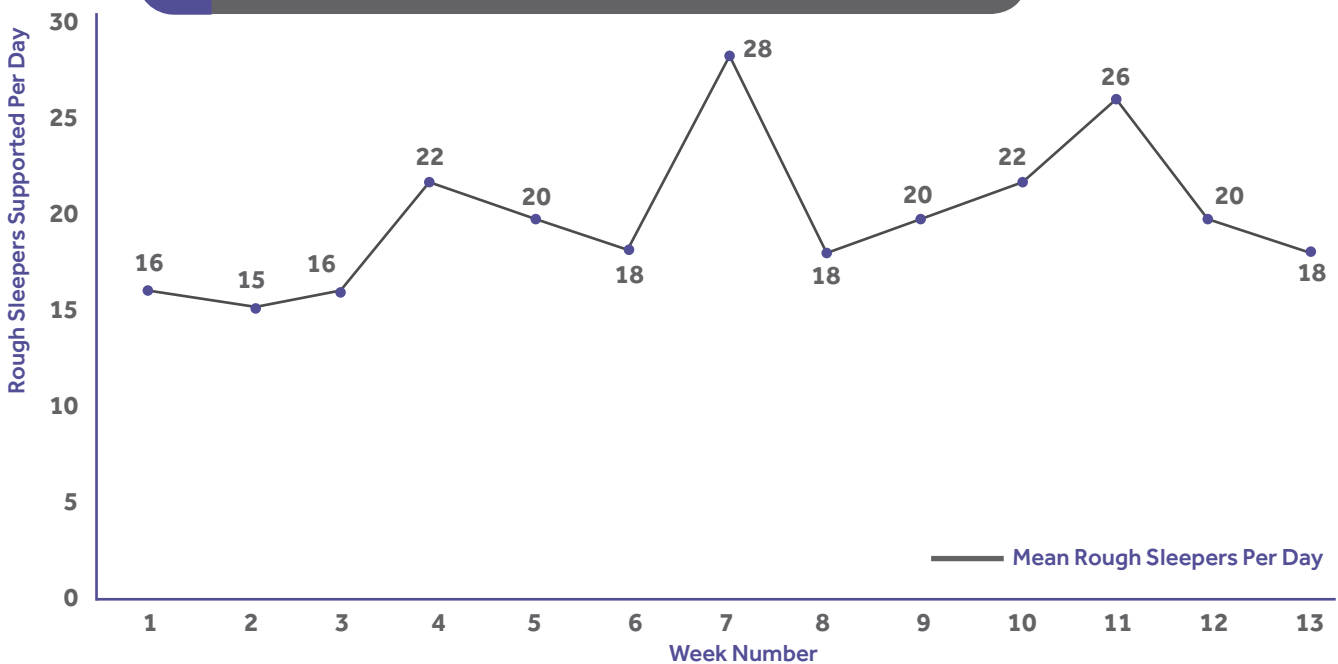
Our Rough Sleepers Intervention Team (RSIT) in Newport operates 7 days a week providing humanitarian aid to rough sleepers in Newport city centre. The data collected by the team over the quarter includes the age & gender of those sleeping in the city centre among other information.

This research is not intended to provide absolute figures for rough sleeping in the city but does indicate trends over time in rough sleeping in the city centre.

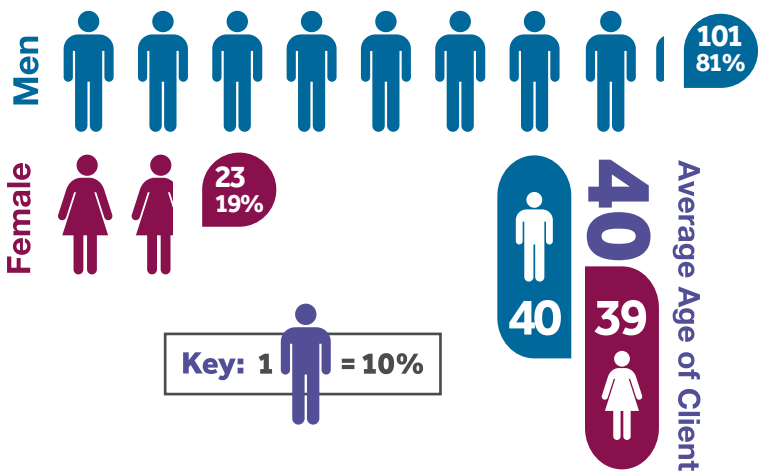
These figures include records made as part of the Rough Sleepers Intervention Team counts as well as a drop-in service in Newport. As such, some people recorded here might not be rough sleeping, but in most cases will be homeless or vulnerably housed.

In Newport, we have seen a **43%** increase in rough sleeping between 2016 Q1 and 2017 Q1.

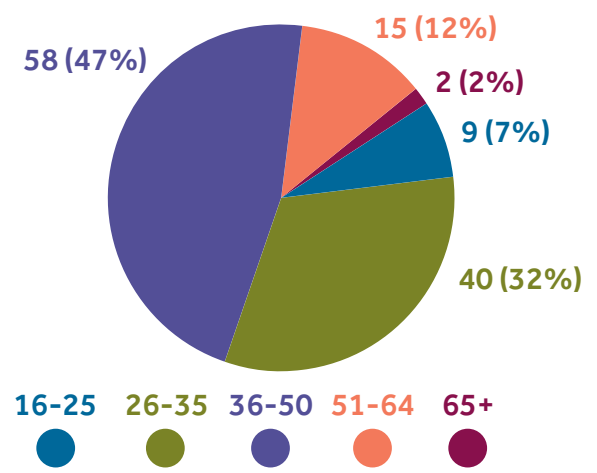
Newport 2017 Q1 Mean Rough Sleepers Supported Per Day



Gender breakdown: Clients Supported = **124**



Age breakdown



Doing Something About Homelessness

For a full report please visit our website: www.thewallich.com

Registered Charity No. 1004103

