

Rough Sleeping: Bridgend

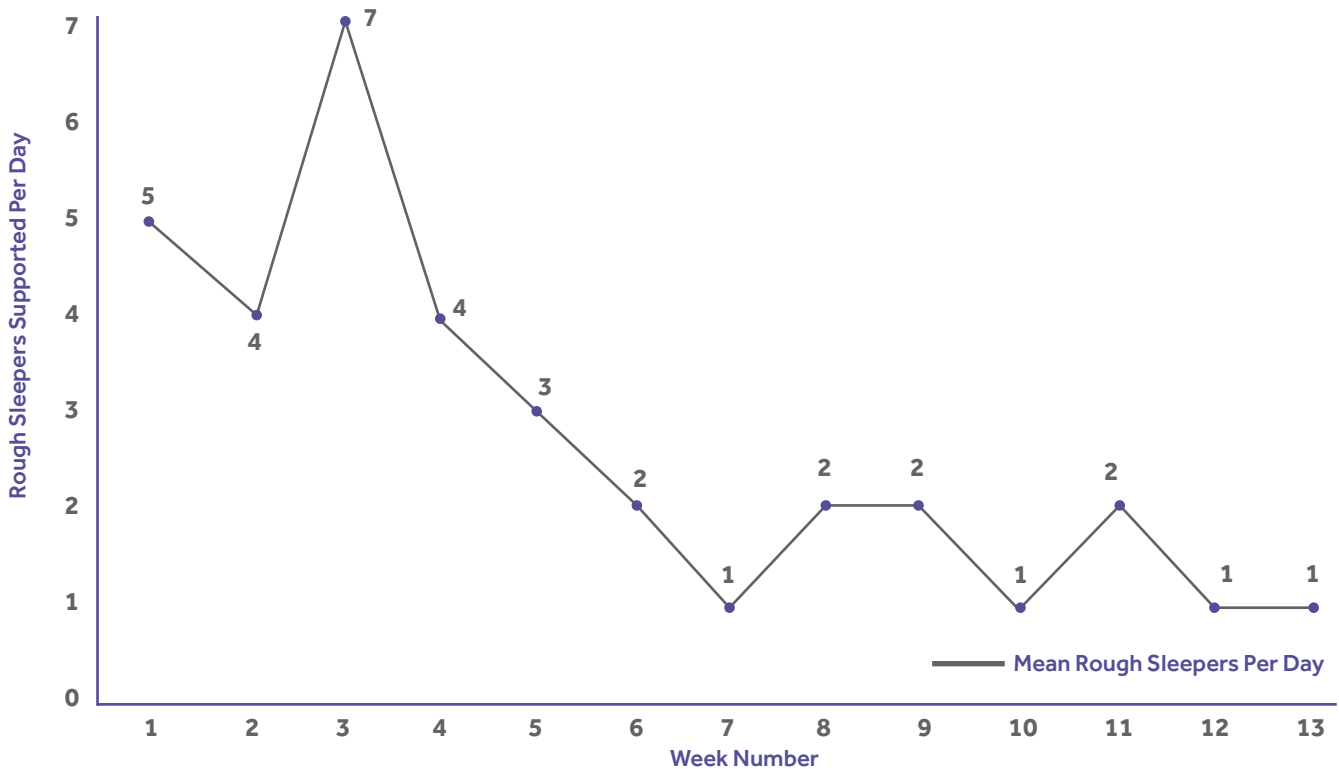


The primary aim of the Rough Sleepers Intervention Teams (RSITs) is to get people off the streets. Our team in Bridgend & Porthcawl operates 7 days a week, 52 weeks a year. The team works to locate rough sleepers and refer them to services and accommodation. The data collected provides the age and gender of those found sleeping rough and the numbers supported each day.

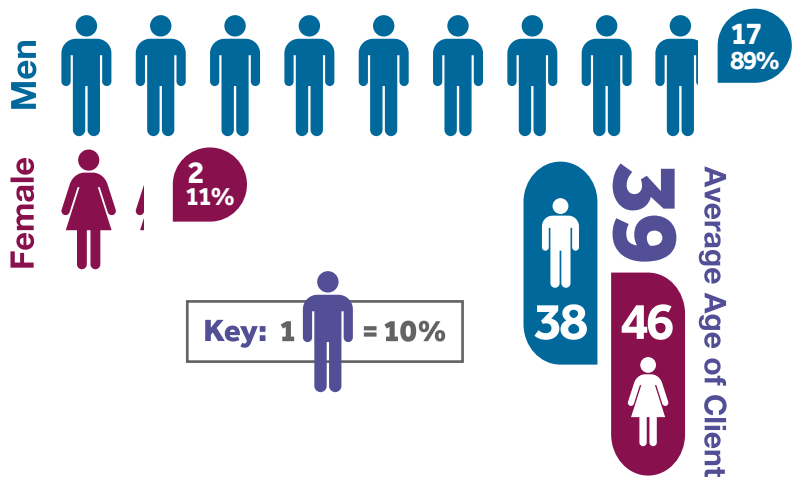
These figures are not intended to provide absolute figures for the number of rough sleepers in the area but can be used as a minimum level and indicate trends over time.

In **Bridgend**, we have seen a **62%** decrease in rough sleeping when compared to Q2 2016.

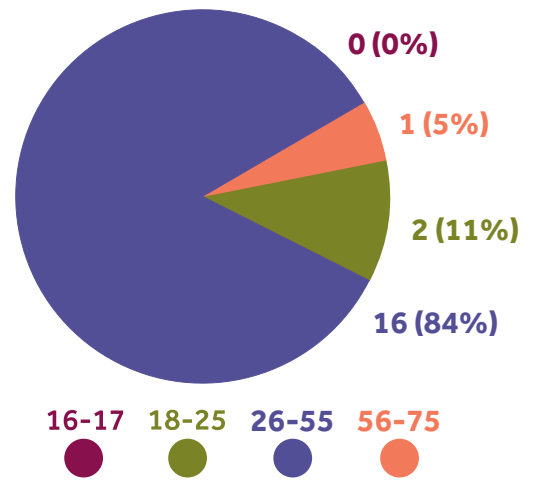
 Bridgend 2016 Q2 Mean Rough Sleepers Supported Per Day



 Gender breakdown: Clients Supported = **19**



 Bridgend Q2 2016 Age breakdown



Doing Something About Homelessness

For a full report please visit our website: www.thewallich.com



Registered Charity No. 1004103