

Rough Sleeping: Swansea



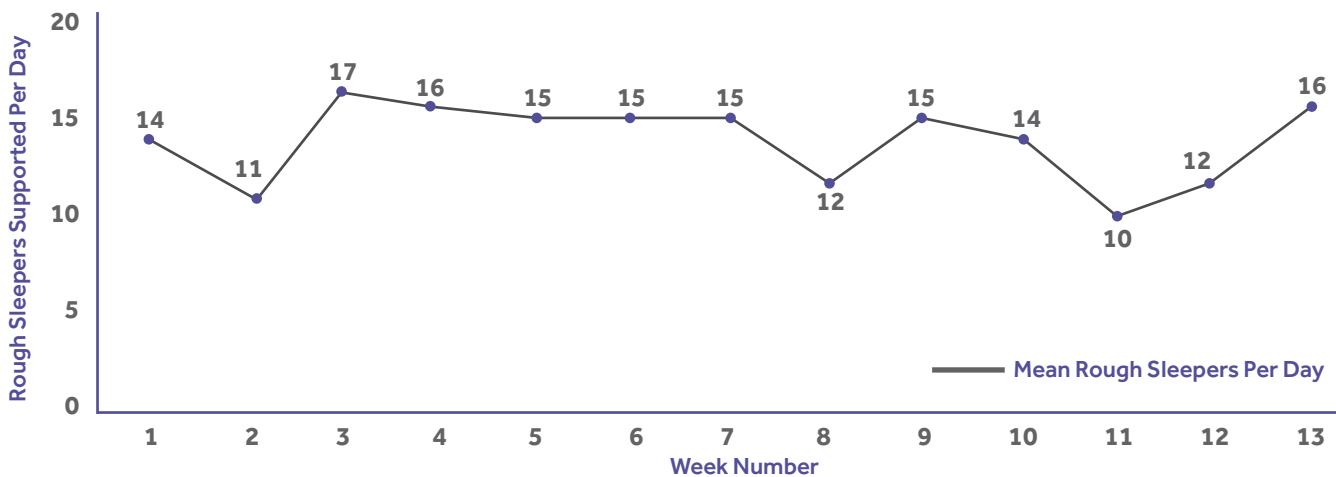
Our Rough Sleepers Intervention Team (RSIT) in Swansea provides humanitarian aid to rough sleepers in Swansea city centre. The data collected by the team over 13 weeks includes the age & gender of those sleeping in the city centre among other information.


This research is not intended to provide absolute figures for rough sleeping in the city but does indicate trends over time in rough sleeping in the city centre.

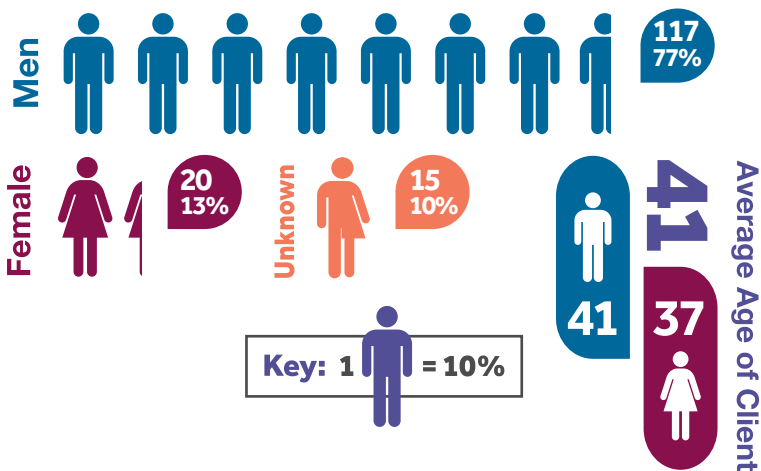
These figures include records made as part of the Rough Sleepers Intervention Team counts as well as a drop-in service in Swansea. As such, some people recorded here might not be rough sleeping, but in most cases will be homeless or vulnerably housed.

In Swansea, we have seen a **27%** increase in rough sleeping when compared to Q4 2015.

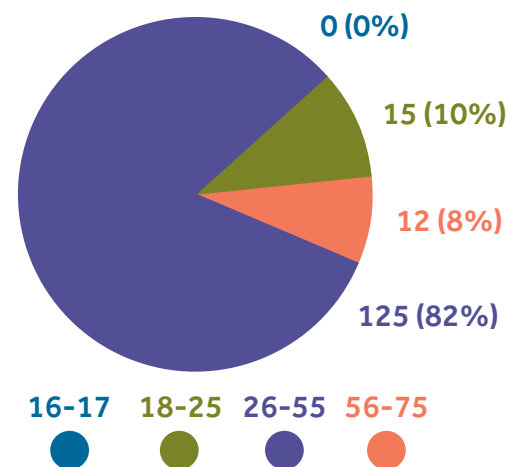
 Swansea 2016 Q4 Mean Rough Sleepers Supported Per Day



 Gender breakdown: Clients Supported = **152**



 Age breakdown



Doing Something About Homelessness

For a full report please visit our website: www.thewallich.com

Registered Charity No. 1004103

